

CITY OF PORT COQUITLAM

Urgent Flood Mitigation Works (2007) Coquitlam River Left Bank Dike

AE Project No. 20072025

| DRAWING LIST | |
|--------------|-----------------------------------|
| | GENERAL |
| 20251100 | COVER AND DRAWING LIST |
| | CIVIL |
| 20251101 | KEY PLAN |
| 20251102 | PLAN AND PROFILE (0+000 TO 0+350) |
| 20251103 | PLAN AND PROFILE (0+350 TO 0+700) |
| 20251104 | PLAN AND PROFILE (0+700 TO 1+950) |
| 20251105 | PLAN AND PROFILE (0+950 TO 1+300) |
| 20251106 | PLAN AND PROFILE (1+300 TO 1+650) |
| 20251107 | PLAN AND PROFILE (1+650 TO 1+950) |
| 20251108 | PLAN AND PROFILE (1+950 TO 1+243) |
| 20251109 | CROSS-SECTIONS |
| 20251110 | CROSS-SECTIONS |
| 20251111 | CROSS-SECTIONS |
| 20251112 | CONSTRUCTION DETAILS |



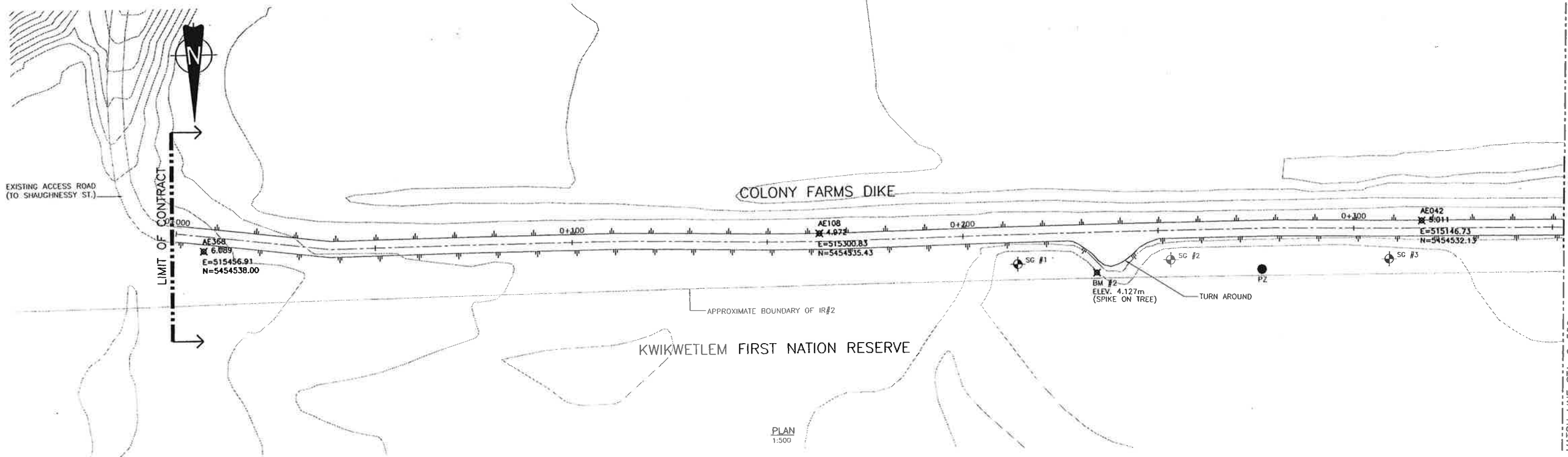
**Associated
Engineering**

*GLOBAL PERSPECTIVE.
LOCAL FOCUS.*

This Drawing is For The Use Of The Client And Project Indicated
No Representations Of Any Kind Are Made To Other Parties

SEE DWG. 20250103

MATCH LINE STA. 0+350



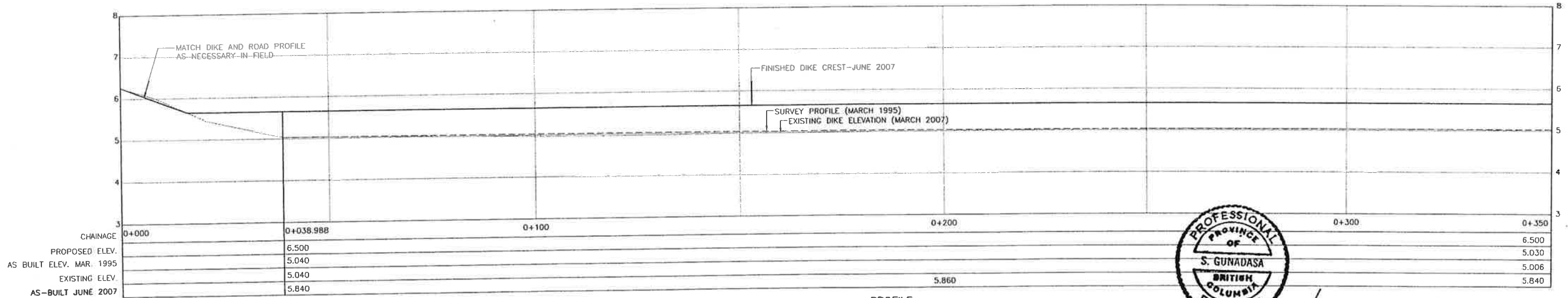
PLAN
1:500

NOTES:

1. ALL FILL TO BE PLACED ON THE LANDSIDE (NORTH SIDE) OF THE EXISTING DIKE
2. SIGNIFICANT SETTLEMENT EXPECTED IMMEDIATELY AFTER FILL PLACEMENT. DO NOT USE CONTROL POINTS FOR VERTICAL OR HORIZONTAL CONTROL ONCE FILL HAS BEEN PLACED

LEGEND

- FINISHED DIKE CREST (JUNE 2007)
- - - SURVEY DIKE PROFILE (MARCH 1995)
- EXISTING DIKE PROFILE
- ⊕ SG #1 SETTLEMENT GAUGES
- ⊗ BM #2 TEMPORARY BENCH MARKS
- PZ PIEZOMETERS



PROFILE
H:1:500 V:1:50



S. Gunadasa
June 27/07

Time: 9:05 / 1/17
Plot: 20251102.DWG (UB)
AutoCAD File: P:\20072025\20251102.DWG
User: S. Gunadasa
Date: 2007-06-27

| NO. | DATE | ENG. | BY | SUBJECT |
|-----|------------|------|------|--|
| 4 | JUNE 2007 | S.G. | G.O. | AS-BUILT |
| 3 | MAY 2007 | A.W. | G.O. | SETTLEMENT ALLOWANCE |
| 2 | APR. 2007 | A.W. | G.O. | PROFILE BASED ON INCREASED LOW LEVEL OUTLET CAPACITY OF B.C. HYDRO DAM |
| 1 | APRIL 2007 | A.W. | G.O. | PRELIMINARY DESIGN |

VERIFY SCALES
BAR IS 20mm ON ORIGINAL DRAWING
0 20mm
IF NOT 20mm ON THIS SHEET, ADJUST SCALES ACCORDINGLY

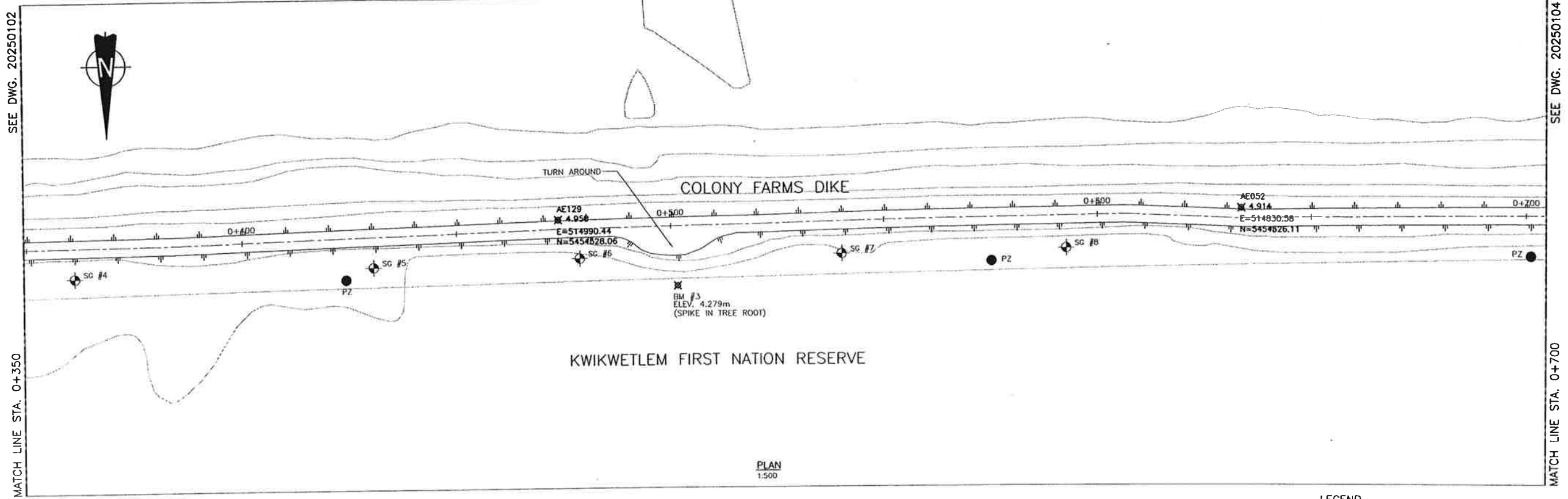


| | |
|-------------|-----------------|
| PROJECT No. | 20072025 |
| SCALE | AS SHOWN |
| DRAWN | G.O. APRIL 2007 |
| DESIGNED | A.W. APRIL 2007 |
| CHECKED | S.G. MAY 2007 |
| APPROVED | |
| DATE | INITIAL |

CITY OF PORT COQUITLAM
PLAN AND PROFILE
STA. 0+000 TO 0+350

| | | |
|---|----------|-------|
| URGENT FLOOD MITIGATION WORKS (2007) COQUITLAM RIVER-LEFT BANK | | |
| DRAWING NUMBER | REV. NO. | SHEET |
| 20251102 | 4 | |

This Drawing is For The Use Of The Client And Project Indicated
No Representations Of Any Kind Are Made To Other Parties



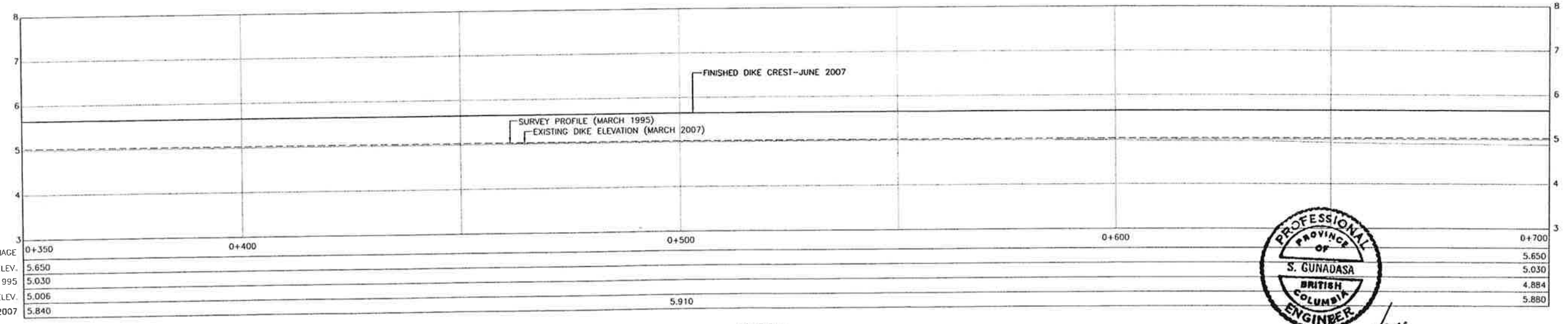
PLAN
1:500

NOTES:

1. ALL FILL TO BE PLACED ON THE LANDSIDE (NORTH SIDE) OF THE EXISTING DIKE
2. SIGNIFICANT SETTLEMENT EXPECTED IMMEDIATELY AFTER FILL PLACEMENT. DO NOT USE CONTROL POINTS FOR VERTICAL OR HORIZONTAL CONTROL ONCE FILL HAS BEEN PLACED

LEGEND

- FINISHED DIKE CREST (JUNE 2007)
- - - SURVEY DIKE PROFILE (MARCH 1995)
- EXISTING DIKE PROFILE
- SG #1 SETTLEMENT GAUGES
- BM #2 TEMPORARY BENCH MARKS
- PZ PIEZOMETERS



PROFILE
H:1:500 V:1:50

| | | | | | |
|--------------------------|-------|-------|-------|-------|-------|
| CHAINAGE | 0+350 | 0+400 | 0+500 | 0+600 | 0+700 |
| PROPOSED ELEV. | 5.650 | | | | 5.650 |
| AS BUILT ELEV. MAR. 1995 | 5.030 | | | | 5.030 |
| EXISTING ELEV. | 5.006 | | 5.910 | | 4.884 |
| AS-BUILT JUNE 2007 | 5.840 | | | | 5.880 |



Time: 9:06
Date: 2007/06/27
User: Sgob
Project: 20072025
Drawing: 20251103.DWG (B)
Path: C:\Users\sgob\Documents\20072025\00_DRAWING\20251103.DWG (B)
Sheet: 2007103, 2007104, 2007105, 2007106, 2007107, 2007108, 2007109, 2007110, 2007111, 2007112, 2007113, 2007114, 2007115, 2007116, 2007117, 2007118, 2007119, 2007120, 2007121, 2007122, 2007123, 2007124, 2007125, 2007126, 2007127, 2007128, 2007129, 2007130, 2007131, 2007132, 2007133, 2007134, 2007135, 2007136, 2007137, 2007138, 2007139, 2007140, 2007141, 2007142, 2007143, 2007144, 2007145, 2007146, 2007147, 2007148, 2007149, 2007150, 2007151, 2007152, 2007153, 2007154, 2007155, 2007156, 2007157, 2007158, 2007159, 2007160, 2007161, 2007162, 2007163, 2007164, 2007165, 2007166, 2007167, 2007168, 2007169, 2007170, 2007171, 2007172, 2007173, 2007174, 2007175, 2007176, 2007177, 2007178, 2007179, 2007180, 2007181, 2007182, 2007183, 2007184, 2007185, 2007186, 2007187, 2007188, 2007189, 2007190, 2007191, 2007192, 2007193, 2007194, 2007195, 2007196, 2007197, 2007198, 2007199, 2007200, 2007201, 2007202, 2007203, 2007204, 2007205, 2007206, 2007207, 2007208, 2007209, 2007210, 2007211, 2007212, 2007213, 2007214, 2007215, 2007216, 2007217, 2007218, 2007219, 2007220, 2007221, 2007222, 2007223, 2007224, 2007225, 2007226, 2007227, 2007228, 2007229, 2007230, 2007231, 2007232, 2007233, 2007234, 2007235, 2007236, 2007237, 2007238, 2007239, 2007240, 2007241, 2007242, 2007243, 2007244, 2007245, 2007246, 2007247, 2007248, 2007249, 2007250, 2007251, 2007252, 2007253, 2007254, 2007255, 2007256, 2007257, 2007258, 2007259, 2007260, 2007261, 2007262, 2007263, 2007264, 2007265, 2007266, 2007267, 2007268, 2007269, 2007270, 2007271, 2007272, 2007273, 2007274, 2007275, 2007276, 2007277, 2007278, 2007279, 2007280, 2007281, 2007282, 2007283, 2007284, 2007285, 2007286, 2007287, 2007288, 2007289, 2007290, 2007291, 2007292, 2007293, 2007294, 2007295, 2007296, 2007297, 2007298, 2007299, 2007300, 2007301, 2007302, 2007303, 2007304, 2007305, 2007306, 2007307, 2007308, 2007309, 2007310, 2007311, 2007312, 2007313, 2007314, 2007315, 2007316, 2007317, 2007318, 2007319, 2007320, 2007321, 2007322, 2007323, 2007324, 2007325, 2007326, 2007327, 2007328, 2007329, 2007330, 2007331, 2007332, 2007333, 2007334, 2007335, 2007336, 2007337, 2007338, 2007339, 2007340, 2007341, 2007342, 2007343, 2007344, 2007345, 2007346, 2007347, 2007348, 2007349, 2007350, 2007351, 2007352, 2007353, 2007354, 2007355, 2007356, 2007357, 2007358, 2007359, 2007360, 2007361, 2007362, 2007363, 2007364, 2007365, 2007366, 2007367, 2007368, 2007369, 2007370, 2007371, 2007372, 2007373, 2007374, 2007375, 2007376, 2007377, 2007378, 2007379, 2007380, 2007381, 2007382, 2007383, 2007384, 2007385, 2007386, 2007387, 2007388, 2007389, 2007390, 2007391, 2007392, 2007393, 2007394, 2007395, 2007396, 2007397, 2007398, 2007399, 2007400, 2007401, 2007402, 2007403, 2007404, 2007405, 2007406, 2007407, 2007408, 2007409, 2007410, 2007411, 2007412, 2007413, 2007414, 2007415, 2007416, 2007417, 2007418, 2007419, 2007420, 2007421, 2007422, 2007423, 2007424, 2007425, 2007426, 2007427, 2007428, 2007429, 2007430, 2007431, 2007432, 2007433, 2007434, 2007435, 2007436, 2007437, 2007438, 2007439, 2007440, 2007441, 2007442, 2007443, 2007444, 2007445, 2007446, 2007447, 2007448, 2007449, 2007450, 2007451, 2007452, 2007453, 2007454, 2007455, 2007456, 2007457, 2007458, 2007459, 2007460, 2007461, 2007462, 2007463, 2007464, 2007465, 2007466, 2007467, 2007468, 2007469, 2007470, 2007471, 2007472, 2007473, 2007474, 2007475, 2007476, 2007477, 2007478, 2007479, 2007480, 2007481, 2007482, 2007483, 2007484, 2007485, 2007486, 2007487, 2007488, 2007489, 2007490, 2007491, 2007492, 2007493, 2007494, 2007495, 2007496, 2007497, 2007498, 2007499, 2007500, 2007501, 2007502, 2007503, 2007504, 2007505, 2007506, 2007507, 2007508, 2007509, 2007510, 2007511, 2007512, 2007513, 2007514, 2007515, 2007516, 2007517, 2007518, 2007519, 2007520, 2007521, 2007522, 2007523, 2007524, 2007525, 2007526, 2007527, 2007528, 2007529, 2007530, 2007531, 2007532, 2007533, 2007534, 2007535, 2007536, 2007537, 2007538, 2007539, 2007540, 2007541, 2007542, 2007543, 2007544, 2007545, 2007546, 2007547, 2007548, 2007549, 2007550, 2007551, 2007552, 2007553, 2007554, 2007555, 2007556, 2007557, 2007558, 2007559, 2007560, 2007561, 2007562, 2007563, 2007564, 2007565, 2007566, 2007567, 2007568, 2007569, 2007570, 2007571, 2007572, 2007573, 2007574, 2007575, 2007576, 2007577, 2007578, 2007579, 2007580, 2007581, 2007582, 2007583, 2007584, 2007585, 2007586, 2007587, 2007588, 2007589, 2007590, 2007591, 2007592, 2007593, 2007594, 2007595, 2007596, 2007597, 2007598, 2007599, 2007600, 2007601, 2007602, 2007603, 2007604, 2007605, 2007606, 2007607, 2007608, 2007609, 2007610, 2007611, 2007612, 2007613, 2007614, 2007615, 2007616, 2007617, 2007618, 2007619, 2007620, 2007621, 2007622, 2007623, 2007624, 2007625, 2007626, 2007627, 2007628, 2007629, 2007630, 2007631, 2007632, 2007633, 2007634, 2007635, 2007636, 2007637, 2007638, 2007639, 2007640, 2007641, 2007642, 2007643, 2007644, 2007645, 2007646, 2007647, 2007648, 2007649, 2007650, 2007651, 2007652, 2007653, 2007654, 2007655, 2007656, 2007657, 2007658, 2007659, 2007660, 2007661, 2007662, 2007663, 2007664, 2007665, 2007666, 2007667, 2007668, 2007669, 2007670, 2007671, 2007672, 2007673, 2007674, 2007675, 2007676, 2007677, 2007678, 2007679, 2007680, 2007681, 2007682, 2007683, 2007684, 2007685, 2007686, 2007687, 2007688, 2007689, 2007690, 2007691, 2007692, 2007693, 2007694, 2007695, 2007696, 2007697, 2007698, 2007699, 2007700, 2007701, 2007702, 2007703, 2007704, 2007705, 2007706, 2007707, 2007708, 2007709, 2007710, 2007711, 2007712, 2007713, 2007714, 2007715, 2007716, 2007717, 2007718, 2007719, 2007720, 2007721, 2007722, 2007723, 2007724, 2007725, 2007726, 2007727, 2007728, 2007729, 2007730, 2007731, 2007732, 2007733, 2007734, 2007735, 2007736, 2007737, 2007738, 2007739, 2007740, 2007741, 2007742, 2007743, 2007744, 2007745, 2007746, 2007747, 2007748, 2007749, 2007750, 2007751, 2007752, 2007753, 2007754, 2007755, 2007756, 2007757, 2007758, 2007759, 2007760, 2007761, 2007762, 2007763, 2007764, 2007765, 2007766, 2007767, 2007768, 2007769, 2007770, 2007771, 2007772, 2007773, 2007774, 2007775, 2007776, 2007777, 2007778, 2007779, 2007780, 2007781, 2007782, 2007783, 2007784, 2007785, 2007786, 2007787, 2007788, 2007789, 2007790, 2007791, 2007792, 2007793, 2007794, 2007795, 2007796, 2007797, 2007798, 2007799, 2007800, 2007801, 2007802, 2007803, 2007804, 2007805, 2007806, 2007807, 2007808, 2007809, 2007810, 2007811, 2007812, 2007813, 2007814, 2007815, 2007816, 2007817, 2007818, 2007819, 2007820, 2007821, 2007822, 2007823, 2007824, 2007825, 2007826, 2007827, 2007828, 2007829, 2007830, 2007831, 2007832, 2007833, 2007834, 2007835, 2007836, 2007837, 2007838, 2007839, 2007840, 2007841, 2007842, 2007843, 2007844, 2007845, 2007846, 2007847, 2007848, 2007849, 2007850, 2007851, 2007852, 2007853, 2007854, 2007855, 2007856, 2007857, 2007858, 2007859, 2007860, 2007861, 2007862, 2007863, 2007864, 2007865, 2007866, 2007867, 2007868, 2007869, 2007870, 2007871, 2007872, 2007873, 2007874, 2007875, 2007876, 2007877, 2007878, 2007879, 2007880, 2007881, 2007882, 2007883, 2007884, 2007885, 2007886, 2007887, 2007888, 2007889, 2007890, 2007891, 2007892, 2007893, 2007894, 2007895, 2007896, 2007897, 2007898, 2007899, 2007900, 2007901, 2007902, 2007903, 2007904, 2007905, 2007906, 2007907, 2007908, 2007909, 2007910, 2007911, 2007912, 2007913, 2007914, 2007915, 2007916, 2007917, 2007918, 2007919, 2007920, 2007921, 2007922, 2007923, 2007924, 2007925, 2007926, 2007927, 2007928, 2007929, 2007930, 2007931, 2007932, 2007933, 2007934, 2007935, 2007936, 2007937, 2007938, 2007939, 2007940, 2007941, 2007942, 2007943, 2007944, 2007945, 2007946, 2007947, 2007948, 2007949, 2007950, 2007951, 2007952, 2007953, 2007954, 2007955, 2007956, 2007957, 2007958, 2007959, 2007960, 2007961, 2007962, 2007963, 2007964, 2007965, 2007966, 2007967, 2007968, 2007969, 2007970, 2007971, 2007972, 2007973, 2007974, 2007975, 2007976, 2007977, 2007978, 2007979, 2007980, 2007981, 2007982, 2007983, 2007984, 2007985, 2007986, 2007987, 2007988, 2007989, 2007990, 2007991, 2007992, 2007993, 2007994, 2007995, 2007996, 2007997, 2007998, 2007999, 2008000

| NO. | DATE | ENG. | BY | SUBJECT |
|-----|------------|------|------|--|
| 4 | JUNE 2007 | S.G. | G.O. | AS-BUILT |
| 3 | MAY 2007 | A.W. | G.O. | SETTLEMENT ALLOWANCE |
| 2 | APR. 2007 | A.W. | G.O. | PROFILE BASED ON INCREASED LOW LEVEL OUTLET CAPACITY OF B.C. HYDRO DAM |
| 1 | APRIL 2007 | A.W. | G.O. | PRELIMINARY DESIGN |

VERIFY SCALES
BAR IS 20mm ON ORIGINAL DRAWING
0 20mm
IF NOT 20mm ON THIS SHEET, ADJUST SCALES ACCORDINGLY

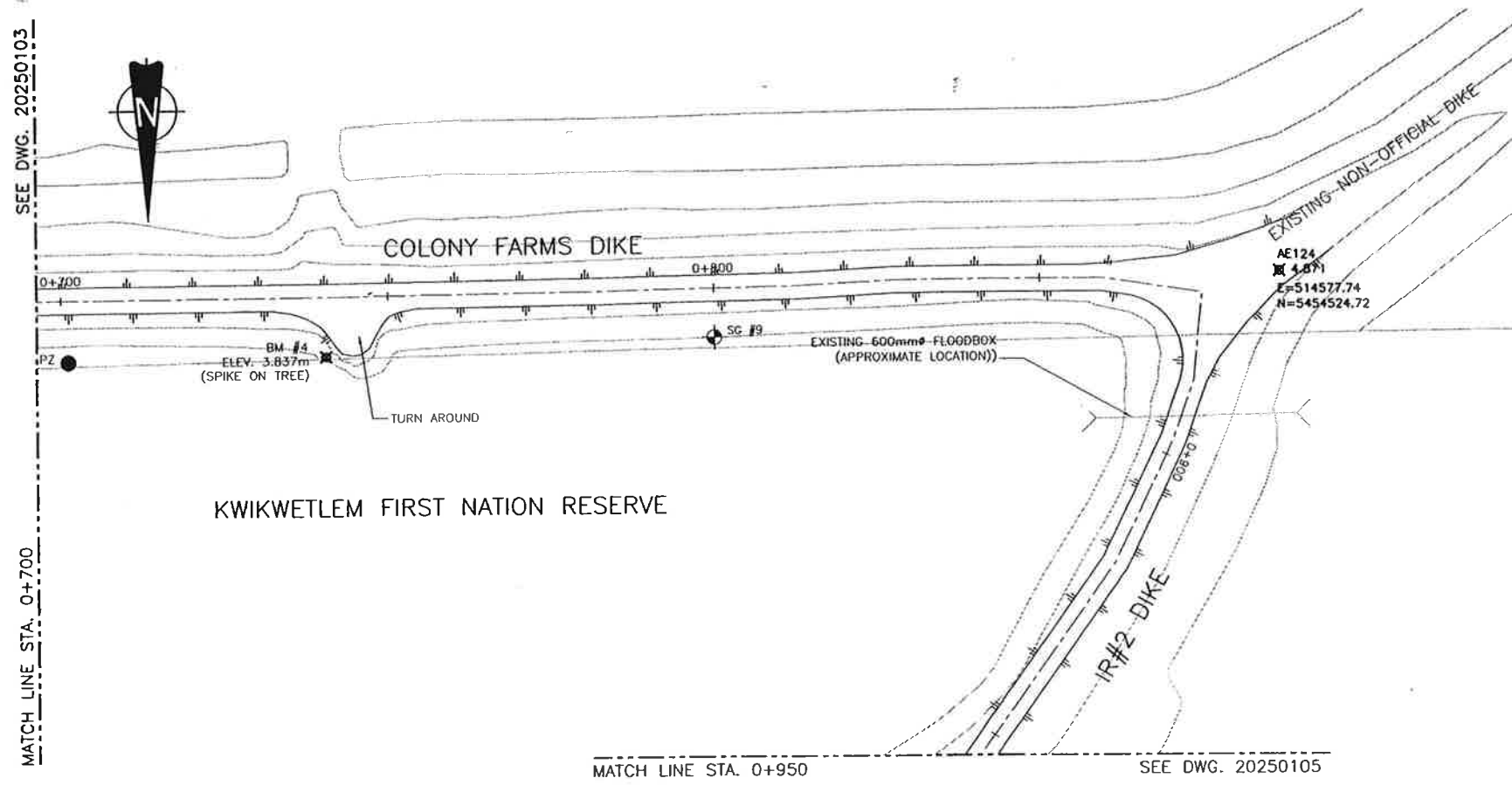


| | |
|-------------|-----------------|
| PROJECT No. | 20072025 |
| SCALE | AS SHOWN |
| DRAWN | G.O. APRIL 2007 |
| DESIGNED | A.W. APRIL 2007 |
| CHECKED | S.G. MAY 2007 |
| APPROVED | |
| DATE | INITIAL |

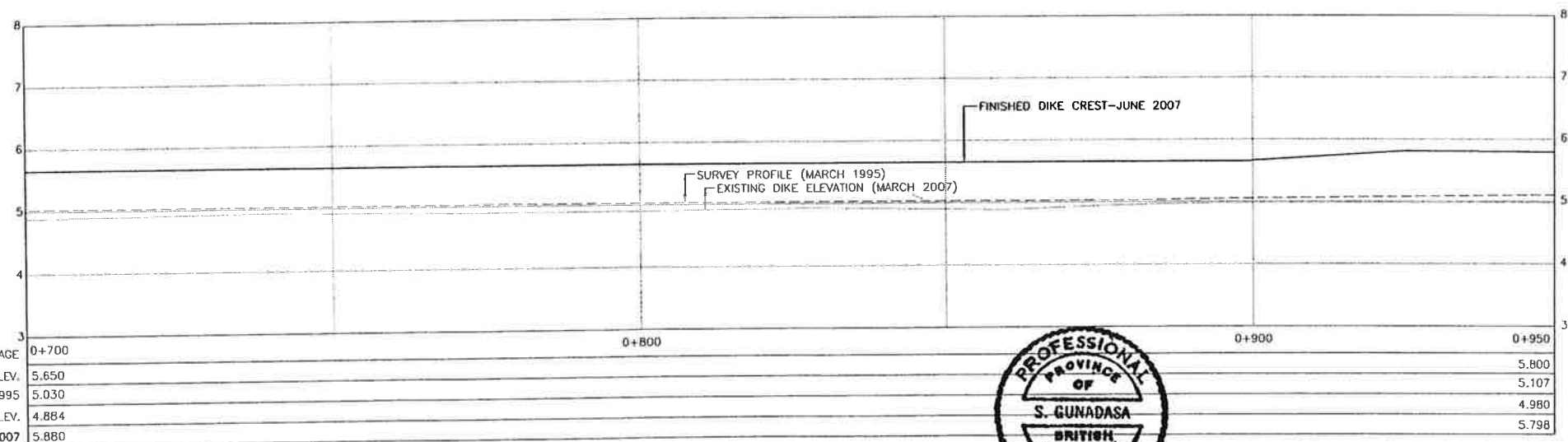
CITY OF PORT COQUITLAM
PLAN AND PROFILE
STA. 0+350 TO 0+700

| | | |
|---|----------|-------|
| URGENT FLOOD MITIGATION WORKS (2007) COQUITLAM RIVER-LEFT BANK | | |
| DRAWING NUMBER | REV. NO. | SHEET |
| 20251103 | 4 | |

This Drawing is For The Use Of The Client And Project Indicated
No Representations Of Any Kind Are Made To Other Parties



PLAN
1:500



| | | | | |
|--------------------------|-------|-------|-------|-------|
| CHAINAGE | 0+700 | 0+800 | 0+900 | 0+950 |
| PROPOSED ELEV. | 5.650 | | | |
| AS BUILT ELEV. MAR. 1995 | 5.030 | | | |
| EXISTING ELEV. | 4.884 | | | |
| AS-BUILT JUNE 2007 | 5.880 | | | |

PROFILE
H:1:500 V:1:50

NOTES:

1. ALL FILL TO BE PLACED ON THE LANDSIDE (NORTH SIDE) OF THE EXISTING DIKE
2. SIGNIFICANT SETTLEMENT EXPECTED IMMEDIATELY AFTER FILL PLACEMENT. DO NOT USE CONTROL POINTS FOR VERTICAL OR HORIZONTAL CONTROL ONCE FILL HAS BEEN PLACED

LEGEND

- FINISHED DIKE CREST (JUNE 2007)
- - - SURVEY DIKE PROFILE (MARCH 1995)
- EXISTING DIKE PROFILE
- ⊙ SG #1 SETTLEMENT GAUGES
- ⊗ BM #2 TEMPORARY BENCH MARKS
- PZ PIEZOMETERS



Title: 13.10_71
 Date: 2007-06-27
 Project: 20072025 COQUITLAM RIVER LEFT BANK
 User: S.GUNADASA
 Path: P:\20072025 COQUITLAM RIVER LEFT BANK\WORKING_DWG\100_CHE_V02031104.DWG (60)
 User: S.GUNADASA
 Date: 2007-06-27 10:50:00 AM

| NO. | DATE | ENG. | BY | SUBJECT |
|-----|------------|------|------|--|
| 4 | JUNE 2007 | S.G. | G.O. | AS-BUILT |
| 3 | MAY 2007 | A.W. | G.O. | SETTLEMENT ALLOWANCE |
| 2 | APR. 2007 | A.W. | G.O. | PROFILE BASED ON INCREASED LOW LEVEL OUTLET CAPACITY OF B.C. HYDRO DAM |
| 1 | APRIL 2007 | A.W. | G.O. | PRELIMINARY DESIGN |

VERIFY SCALES

BAR IS 20mm ON ORIGINAL DRAWING

0 20mm

IF NOT 20mm ON THIS SHEET, ADJUST SCALES ACCORDINGLY



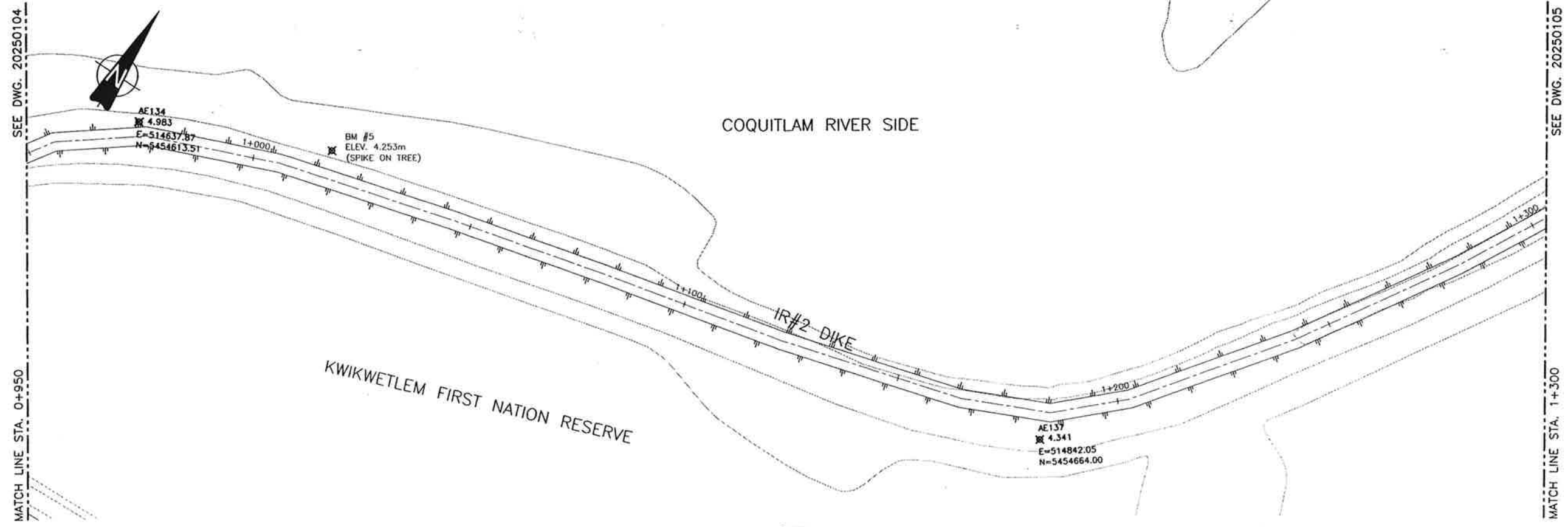
| | |
|-------------|----------|
| PROJECT No. | 20072025 |
| SCALE | AS SHOWN |
| DRAWN | G.O. |
| DESIGNED | A.W. |
| CHECKED | S.G. |
| APPROVED | |
| DATE | INITIAL |

CITY OF PORT COQUITLAM

PLAN AND PROFILE
STA. 0+700 TO 0+950

| | | |
|--|----------|-------|
| URGENT FLOOD MITIGATION WORKS (2007) COQUITLAM RIVER-LEFT BANK | | |
| DRAWING NUMBER | REV. NO. | SHEET |
| 20251104 | 4 | |

This Drawing is For The Use Of The Client And Project Indicated. No Representations Of Any Kind Are Made To Other Parties.



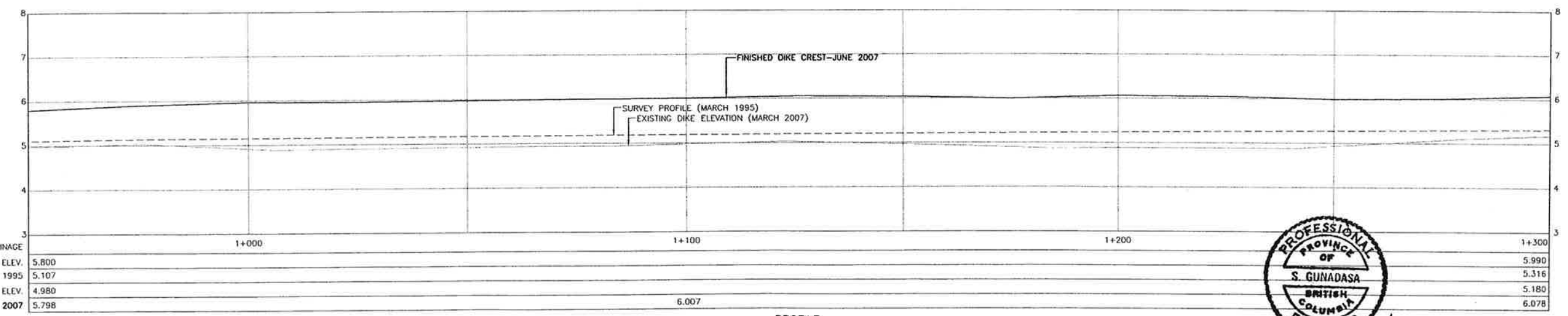
PLAN
1:500

NOTES:

1. NO FILL TO BE PLACED OUTSIDE THE FOOT-PRINT OF THE EXISTING DIKE
2. SIGNIFICANT SETTLEMENT EXPECTED IMMEDIATELY AFTER FILL PLACEMENT. DO NOT USE CONTROL POINTS FOR VERTICAL OR HORIZONTAL CONTROL ONCE FILL HAS BEEN PLACED

LEGEND

- FINISHED DIKE CREST (JUNE 2007)
- - - SURVEY DIKE PROFILE (MARCH 1995)
- EXISTING DIKE PROFILE
- ⊗ BM #2 TEMPORARY BENCH MARKS



PROFILE
H:1:500 V:1:50



S. Gunadasa
June 27/07

Date: 2007/06/10
Time: 11:52
User: sgunadasa
Project: 20072025
Drawing: 20072025_001.dwg
Path: C:\Users\sgunadasa\AppData\Local\Temp\20072025_001.dwg
Scale: 20072025_001.dwg

| NO. | DATE | ENG. | BY | SUBJECT |
|-----|------------|------|------|--|
| 4 | JUNE 2007 | S.G. | G.O. | AS-BUILT |
| 3 | MAY 2007 | A.W. | G.O. | SETTLEMENT ALLOWANCE |
| 2 | APR. 2007 | A.W. | G.O. | PROFILE BASED ON INCREASED LOW LEVEL OUTLET CAPACITY OF B.C. HYDRO DAM |
| 1 | APRIL 2007 | A.W. | G.O. | PRELIMINARY DESIGN |

VERIFY SCALES
BAR IS 20mm ON ORIGINAL DRAWING
0 20mm
IF NOT 20mm ON THIS SHEET, ADJUST SCALES ACCORDINGLY



| | | | |
|-------------|----------|---------|------------|
| PROJECT No. | 20072025 | | |
| SCALE | AS SHOWN | | |
| DRAWN | G.O. | | APRIL 2007 |
| DESIGNED | A.W. | | APRIL 2007 |
| CHECKED | S.G. | | MAY 2007 |
| APPROVED | | | |
| DATE | | INITIAL | |

| | |
|---|--|
| CITY OF PORT COQUITLAM | |
| PLAN AND PROFILE STA. 0+950 TO 1+300 | |

| | | |
|---|----------|-------|
| URGENT FLOOD MITIGATION WORKS (2007) COQUITLAM RIVER-LEFT BANK | | |
| DRAWING NUMBER | REV. NO. | SHEET |
| 20251105 | 4 | 1 |

This Drawing is For The Use Of The Client And Project Indicated
No Representations Of Any Kind Are Made To Other Parties

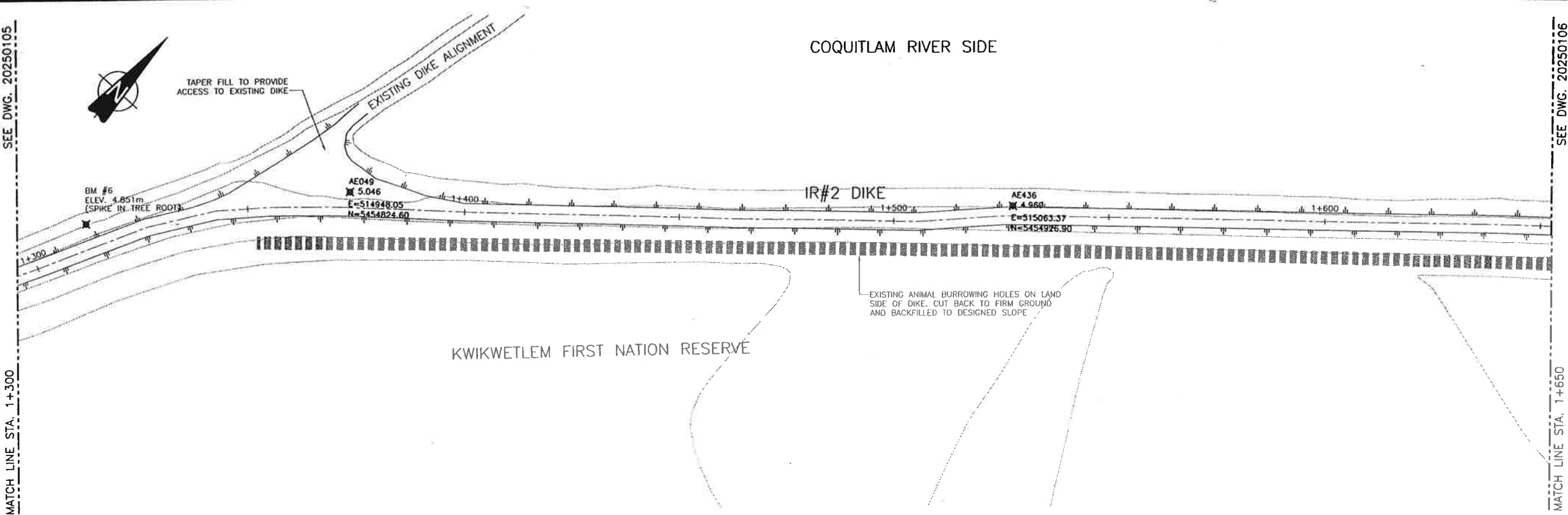
SEE DWG. 20250105
MATCH LINE STA. 1+300

MATCH LINE STA. 1+650
SEE DWG. 20250106



TAPER FILL TO PROVIDE ACCESS TO EXISTING DIKE

COQUITLAM RIVER SIDE



PLAN
1:500

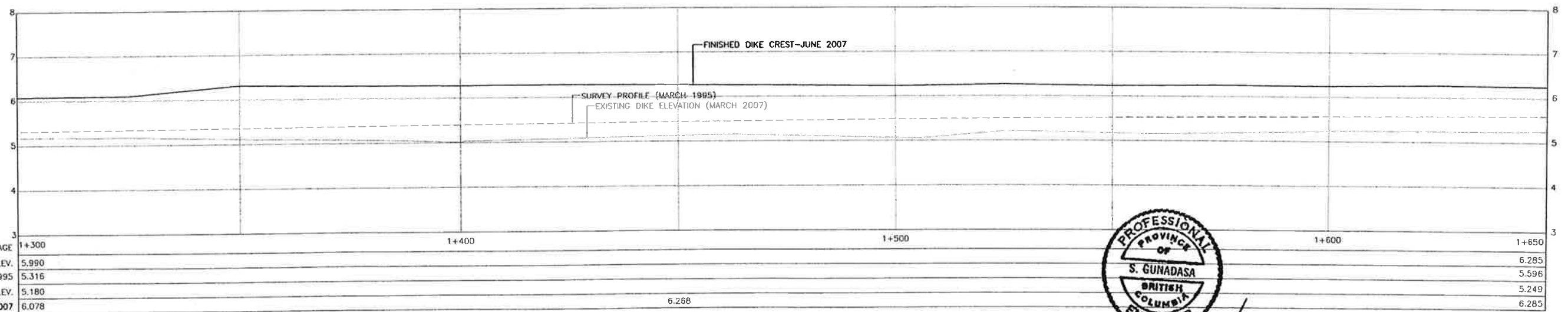
EXISTING ANIMAL BURROWING HOLES ON LAND SIDE OF DIKE, CUT BACK TO FIRM GROUND AND BACKFILLED TO DESIGNED SLOPE

NOTES:

- NO FILL TO BE PLACED OUTSIDE THE FOOT-PRINT OF THE EXISTING DIKE
- SIGNIFICANT SETTLEMENT EXPECTED IMMEDIATELY AFTER FILL PLACEMENT. DO NOT USE CONTROL POINTS FOR VERTICAL OR HORIZONTAL CONTROL ONCE FILL HAS BEEN PLACED

LEGEND

- FINISHED DIKE CREST (JUNE 2007)
- SURVEY DIKE PROFILE (MARCH 1995)
- EXISTING DIKE PROFILE
- BM #2 TEMPORARY BENCH MARKS



PROFILE
H:1:500 V:1:50



S. Gunadasa
June 27/07

| | | | | | |
|--------------------------|-------|-------|-------|-------|-------|
| CHAINAGE | 1+300 | 1+400 | 1+500 | 1+600 | 1+650 |
| PROPOSED ELEV. | 5.990 | | | | 6.285 |
| AS BUILT ELEV. MAR. 1995 | 5.316 | | | | 5.596 |
| EXISTING ELEV. | 5.180 | | | | 5.249 |
| AS-BUILT JUNE 2007 | 6.078 | | 6.268 | | 6.285 |

Title: 1437
Date: 2007/06/19
Plot Scale: 1" = 100' (Paper Scale)
File: 20072025_100_COVLA_20251106.DWG (GO)
User: 20072025_100_COVLA_20251106.DWG (GO)
Date: 20072025_100_COVLA_20251106.DWG (GO)

| NO. | DATE | ENG. | BY | SUBJECT |
|-----|------------|------|------|--|
| 4 | JUNE 2007 | S.G. | G.O. | AS-BUILT |
| 3 | MAY 2007 | A.W. | G.O. | SETTLEMENT ALLOWANCE |
| 2 | APR. 2007 | A.W. | G.O. | PROFILE BASED ON INCREASED LOW LEVEL OUTLET CAPACITY OF B.C. HYDRO DAM |
| 1 | APRIL 2007 | A.W. | G.O. | PRELIMINARY DESIGN |

VERIFY SCALES
BAR IS 20mm ON ORIGINAL DRAWING
0 20mm
IF NOT 20mm ON THIS SHEET, ADJUST SCALES ACCORDINGLY



| | | | |
|-------------|----------|---------|------------|
| PROJECT No. | 20072025 | | |
| SCALE | AS SHOWN | | |
| DRAWN | G.Q. | | APRIL 2007 |
| DESIGNED | A.W. | | APRIL 2007 |
| CHECKED | S.G. | | MAY 2007 |
| APPROVED | | | |
| DATE | | INITIAL | |

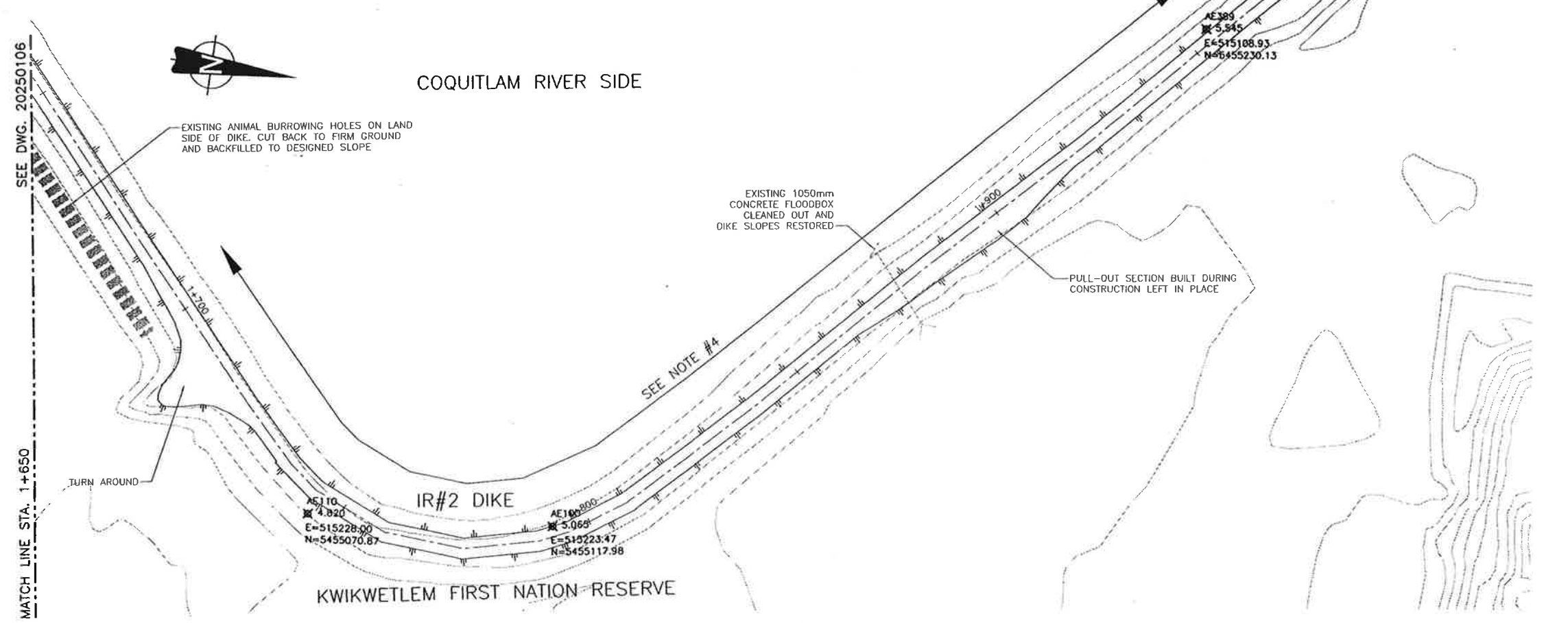
| | |
|---|--|
| CITY OF PORT COQUITLAM | |
| PLAN AND PROFILE STA. 1+300 TO 1+650 | |

| | | |
|---|----------|-------|
| URGENT FLOOD MITIGATION WORKS (2007) COQUITLAM RIVER-LEFT BANK | | |
| DRAWING NUMBER | REV. NO. | SHEET |
| 20251106 | 4 | |

This Drawing is For The Use Of The Client And Project Indicated. No Representations Of Any Kind Are Made To Other Parties.

MATCH LINE STA. 1+950

SEE DWG. 20250108



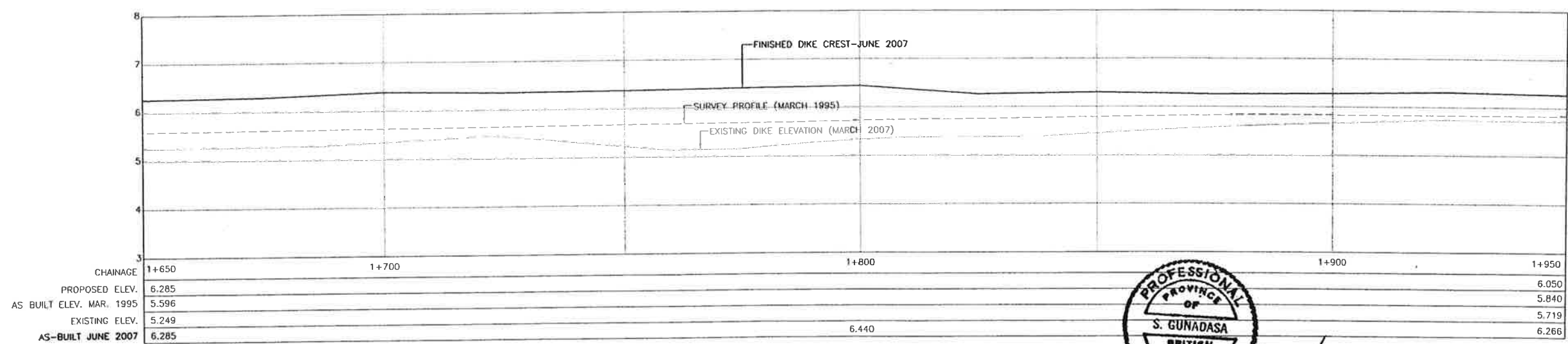
NOTES:

1. NO FILL TO BE PLACED OUTSIDE THE FOOT-PRINT OF THE EXISTING DIKE
2. SIGNIFICANT SETTLEMENT EXPECTED IMMEDIATELY AFTER FILL PLACEMENT. DO NOT USE CONTROL POINTS FOR VERTICAL OR HORIZONTAL CONTROL ONCE FILL HAS BEEN PLACED
3. PROPOSED DIKE CENTERLINE TO MATCH EXISTING DIKE CENTERLINE FROM STA. 1+700 TO 1+950. TAPER ALIGNMENT AS DIRECTED BY ENGINEER

LEGEND

- FINISHED DIKE CREST (JUNE 2007)
- - - SURVEY DIKE PROFILE (MARCH 1995)
- EXISTING DIKE PROFILE
- BM #2 TEMPORARY BENCH MARKS

PLAN
1:500



PROFILE
H:1:500 V:1:50



S. Gunadasa
June 27/07

Time: 14:00/17:00 (Paper Size) Plot: 1:1 (Plot Scale) Plot: 1:1 (Plot Scale) File: C:\Users\Public\Desktop\Projects\20250108\20250108.dwg (00) Date: 2025/06/27 10:00:00 AM (00) User: sgunadasa

| NO. | DATE | ENG. | BY | SUBJECT |
|-----|------------|------|------|--|
| 4 | JUNE 2007 | S.G. | C.G. | AS-BUILT |
| 3 | MAY 2007 | A.W. | G.Q. | SETTLEMENT ALLOWANCE |
| 2 | APR. 2007 | A.W. | G.Q. | PROFILE BASED ON INCREASED LOW LEVEL OUTLET CAPACITY OF B.C. HYDRO DAM |
| 1 | APRIL 2007 | A.W. | G.Q. | PRELIMINARY DESIGN |

VERIFY SCALES
BAR IS 20mm ON ORIGINAL DRAWING
IF NOT 20mm ON THIS SHEET, ADJUST SCALES ACCORDINGLY



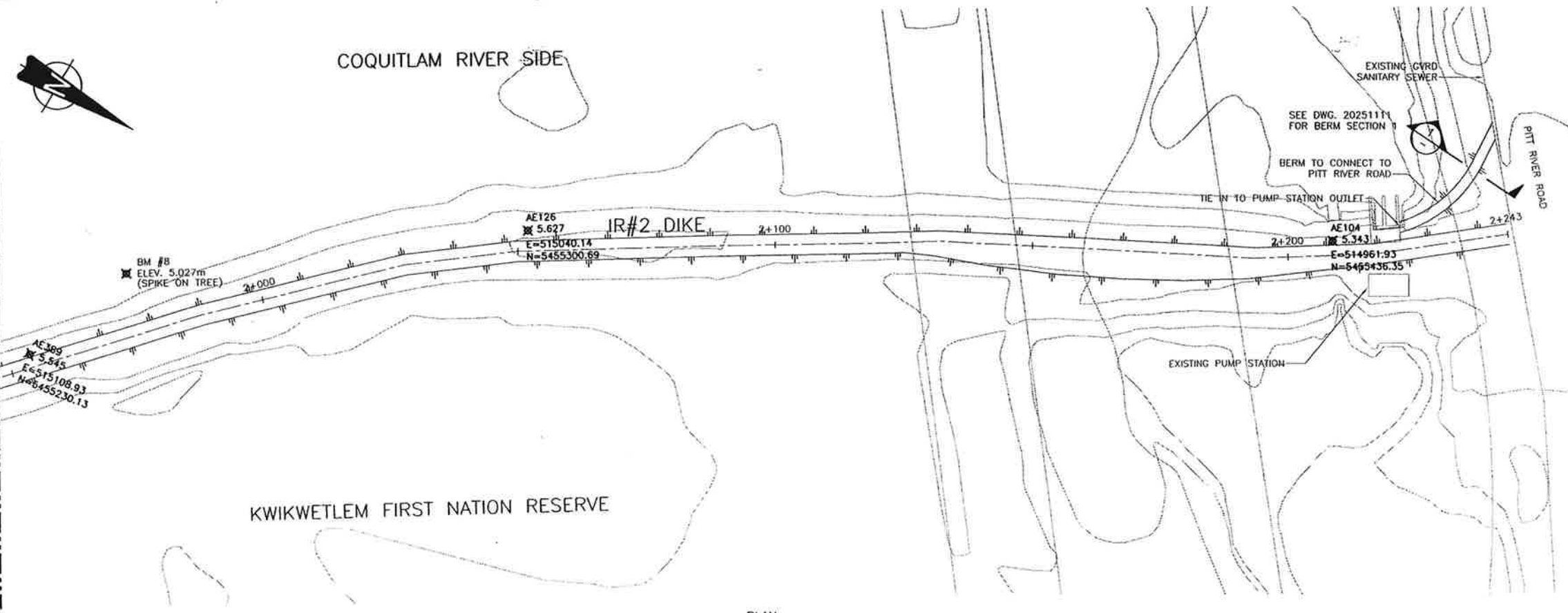
| | | | |
|-------------|----------|--|------------|
| PROJECT No. | 20072025 | | |
| SCALE | AS SHOWN | | |
| DRAWN | G.Q. | | APRIL 2007 |
| DESIGNED | A.W. | | APRIL 2007 |
| CHECKED | S.G. | | MAY 2007 |
| APPROVED | | | |
| DATE | | | INITIAL |

CITY OF PORT COQUITLAM
PLAN AND PROFILE
STA. 1+650 TO 1+950

| | | |
|--|----------|-------|
| URGENT FLOOD MITIGATION WORKS (2007) COQUITLAM RIVER-LEFT BANK | | |
| DRAWING NUMBER | REV. NO. | SHEET |
| 20251107 | 4 | |

This Drawing is For The Use Of The Client And Project Indicated
No Representations Of Any Kind Are Made To Other Parties

SEE DWG. 20250107
MATCH LINE STA. 1+950



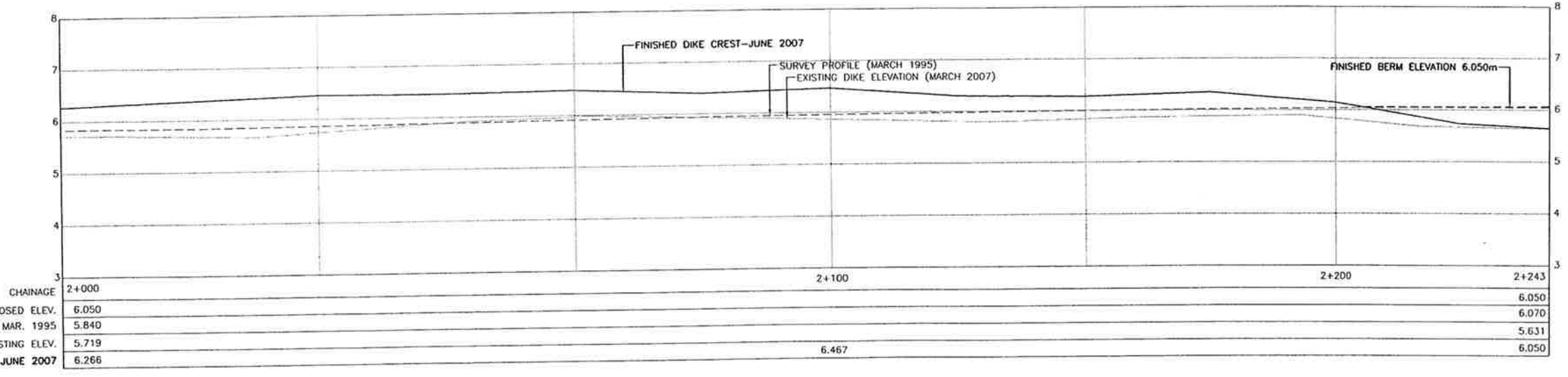
PLAN
1:500

NOTES:

1. NO FILL TO BE PLACED OUTSIDE THE FOOT-PRINT OF THE EXISTING DIKE
2. SIGNIFICANT SETTLEMENT EXPECTED IMMEDIATELY AFTER FILL PLACEMENT. DO NOT USE CONTROL POINTS FOR VERTICAL OR HORIZONTAL CONTROL ONCE FILL HAS BEEN PLACED

LEGEND

- FINISHED DIKE CREST (JUNE 2007)
- - - SURVEY DIKE PROFILE (MARCH 1995)
- - - EXISTING DIKE PROFILE
- ⊗ BM #2 TEMPORARY BENCH MARKS



PROFILE
H:1:500 V:1:50



S. Gunadasa
June 27/07

Time: 14:05
Date: 2007/07/27 (Issue: 5000)
C:\Users\Public\Desktop\Projects\2007\2025\1108.dwg (09)
Assoc-Eng. P:\2007\2025\1108.dwg (09)
Assoc-Eng. P:\2007\2025\1108.dwg (09)
Assoc-Eng. P:\2007\2025\1108.dwg (09)

| NO. | DATE | ENG. | BY | SUBJECT |
|-----|------------|------|------|--|
| 4 | JUNE 2007 | S.G. | G.O. | AS-BUILT |
| 3 | MAY 2007 | A.W. | G.O. | SETTLEMENT ALLOWANCE |
| 2 | APR. 2007 | A.W. | G.O. | PROFILE BASED ON INCREASED LOW LEVEL OUTLET CAPACITY OF B.C. HYDRO DAM |
| 1 | APRIL 2007 | A.W. | G.O. | PRELIMINARY DESIGN |

VERIFY SCALES

BAR IS 20mm ON ORIGINAL DRAWING

0 20mm

IF NOT 20mm ON THIS SHEET, ADJUST SCALES ACCORDINGLY



| | |
|-------------|-----------------|
| PROJECT No. | 20072025 |
| SCALE | AS SHOWN |
| DRAWN | G.O. APRIL 2007 |
| DESIGNED | A.W. APRIL 2007 |
| CHECKED | S.G. MAY 2007 |
| APPROVED | |
| DATE | INITIAL |

CITY OF PORT COQUITLAM

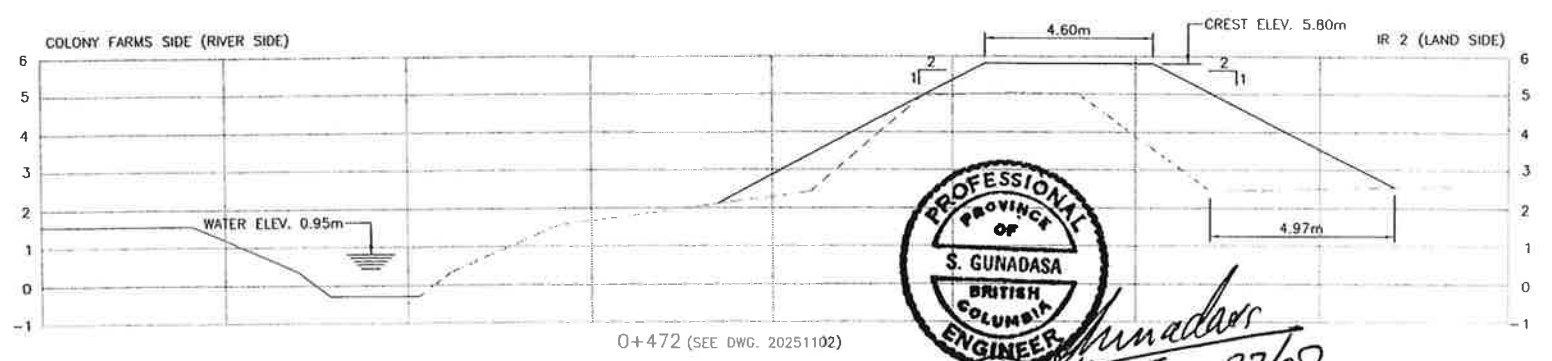
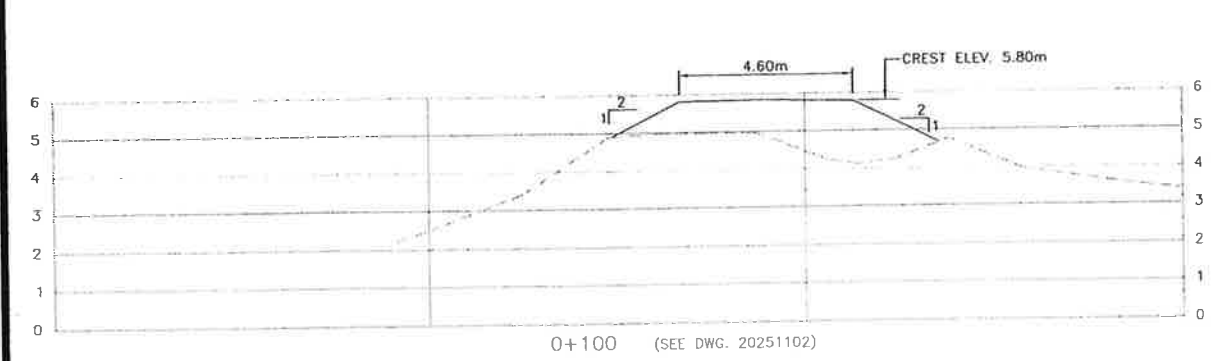
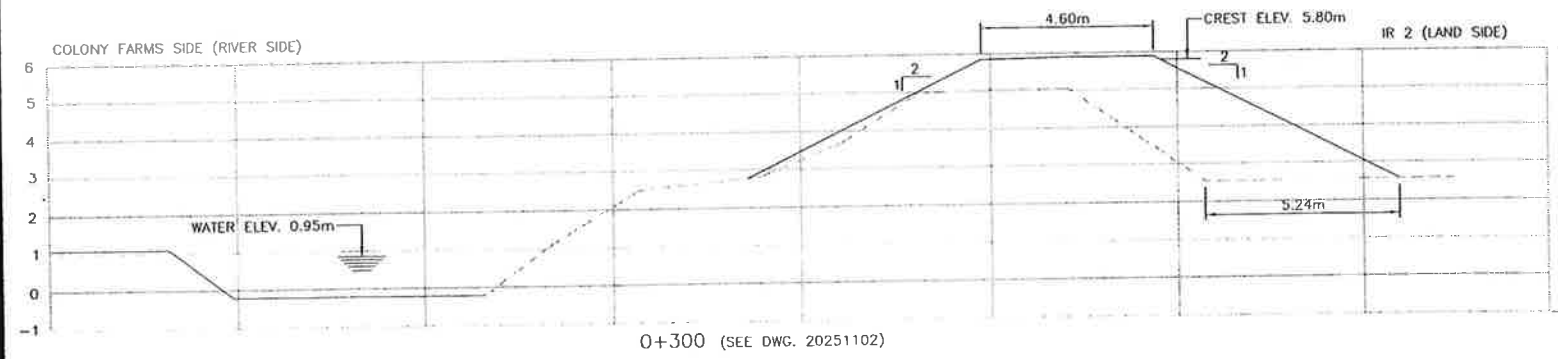
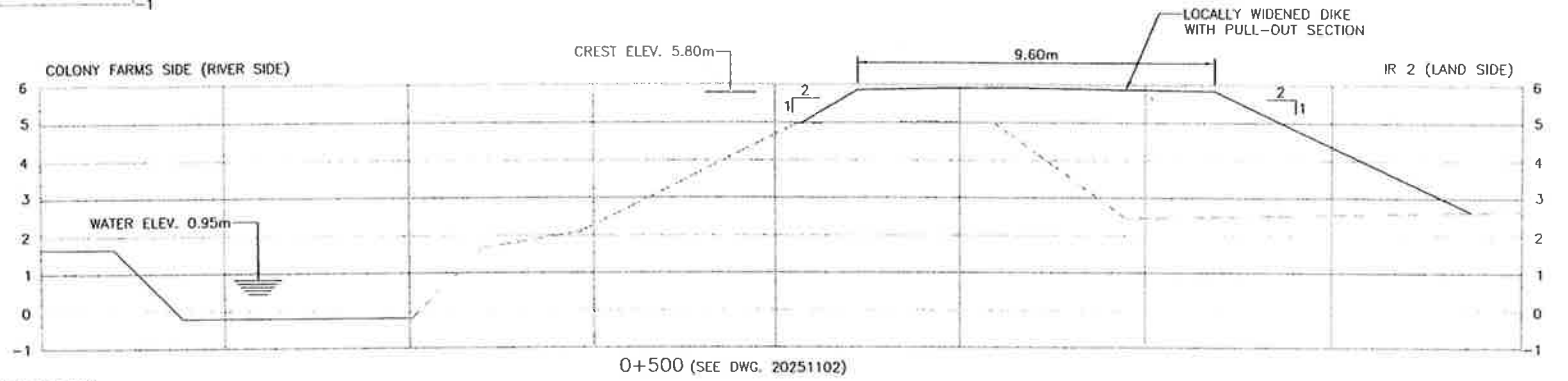
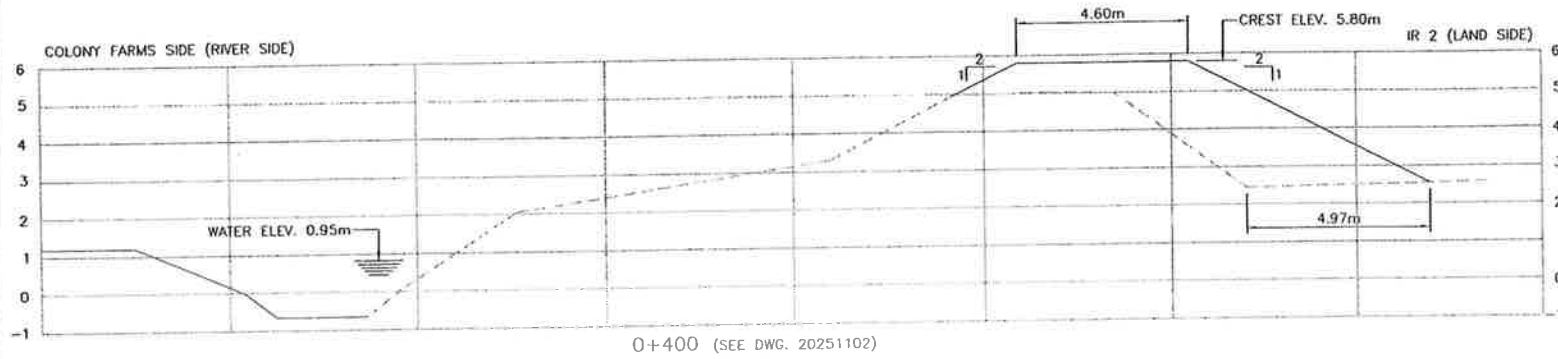
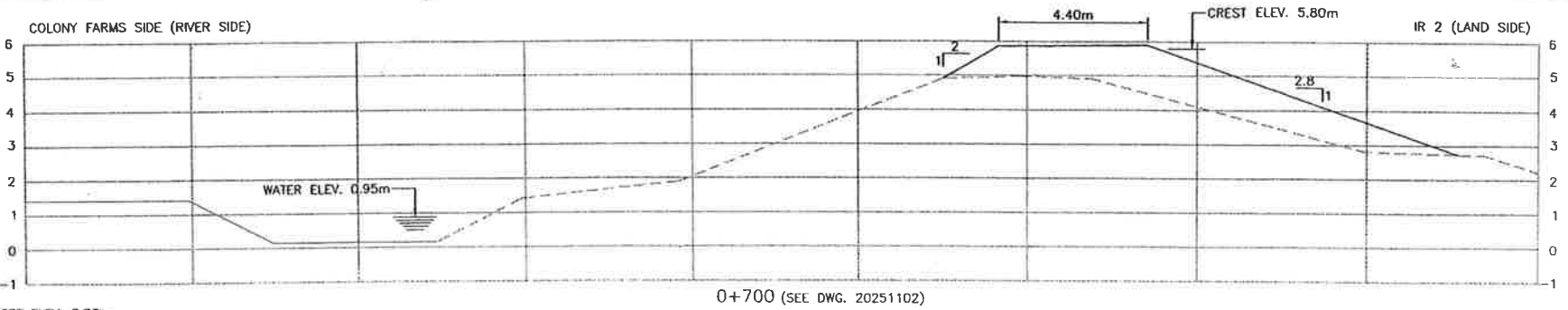
PLAN AND PROFILE
STA. 1+950 TO 2+243

| | | |
|---|----------|-------|
| URGENT FLOOD MITIGATION WORKS (2007) COQUITLAM RIVER-LEFT BANK | | |
| DRAWING NUMBER | REV. NO. | SHEET |
| 20251108 | 4 | |

This Drawing is For The Use Of The Client And Project Indicated
No Representations Of Any Kind Are Made To Other Parties

NOTES:

1. PROPOSED FILL SLOPES AT 2H:1V; STARTING FROM LAND SIDE TOE
2. EXISTING FILL ON LAND SIDE OF PROPOSED FILL ENVELOPE TO REMAIN IN PLACE
3. DITCH WIDTH ESTIMATED TO BE APPROX. 10.0m
4. FOR DETAILS SEE TYPICAL SECTION ON DWG. 20251112



Time: 10:59 AM '07
Plot: 20251112.dwg
AutoCAD File: P:\20072025\02_Coquitlam_River_Dike_Working_DWG.dwg (02)

| NO. | DATE | ENG. | BY | SUBJECT |
|-----|------------|------|------|--|
| 4 | JUNE 2007 | S.G. | G.O. | AS-BUILT |
| 3 | MAY 2007 | A.W. | G.O. | SETTLEMENT ALLOWANCE |
| 2 | APR. 2007 | A.W. | G.O. | PROFILE BASED ON INCREASED LOW LEVEL OUTLET CAPACITY OF B.C. HYDRO DAM |
| 1 | APRIL 2007 | A.W. | G.O. | PRELIMINARY DESIGN |

VERIFY SCALES
BAR IS 20mm ON ORIGINAL DRAWING
0 20mm
IF NOT 20mm ON THIS SHEET, ADJUST SCALES ACCORDINGLY



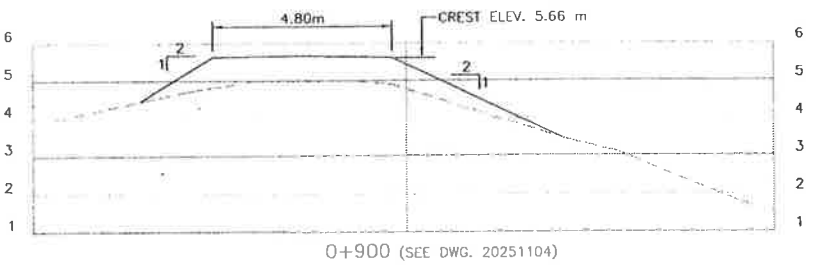
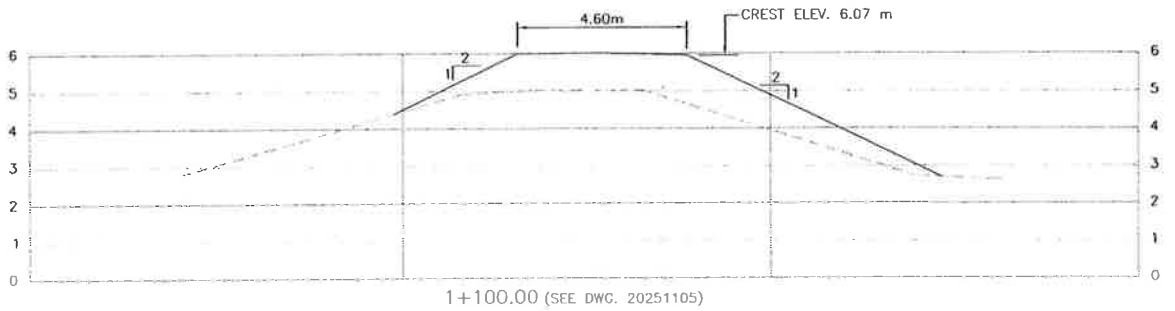
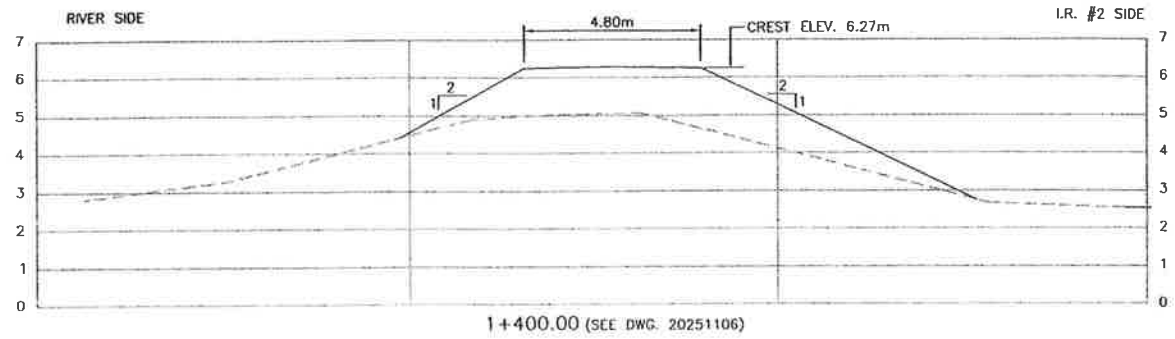
| | |
|-------------|-----------------|
| PROJECT No. | 20072025 |
| SCALE | 1:100 |
| DRAWN | G.Q. APRIL 2007 |
| DESIGNED | A.W. APRIL 2007 |
| CHECKED | S.G. MAY 2007 |
| APPROVED | |
| DATE | INITIAL |

CITY OF PORT COQUITLAM
COLONY FARMS - CROSS-SECTIONS

| | | |
|---|----------|-------|
| URGENT FLOOD MITIGATION WORKS (2007) COQUITLAM RIVER-LEFT BANK | | |
| DRAWING NUMBER | REV. NO. | SHEET |
| 20251109 | 4 | |

This Drawing is For The Use Of The Client And Project Indicated
No Representations Of Any Kind Are Made To Other Parties

Time: 10:37
Date: 2007/5/10
User: SGC
AutoCAD File: P:\2007\2025\COCOUNT_RIVER_DIKE\WORKING_DWG5\100_CIVL_20025110.DWG (00)



- NOTES:**
1. SIDE SLOPES AS NOTED
 2. CREST WIDTH=4.6m (TYPICAL) OR AS NOTED
 3. CREST ELEVATION AS NOTED


S. Gunadasa
 June 27/07

| NO. | DATE | ENG. | BY | SUBJECT |
|-----|------------|------|------|--|
| 4 | JUNE 2007 | S.G. | G.O. | AS-BUILT |
| 3 | MAY 2007 | A.W. | G.O. | SETTLEMENT ALLOWANCE |
| 2 | APR. 2007 | A.W. | G.O. | PROFILE BASED ON INCREASED LOW LEVEL OUTLET CAPACITY OF B.C. HYDRO DAM |
| 1 | APRIL 2007 | A.W. | G.O. | PRELIMINARY DESIGN |

VERIFY SCALES

BAR IS 20mm ON ORIGINAL DRAWING

0  20mm

IF NOT 20mm ON THIS SHEET, ADJUST SCALES ACCORDINGLY



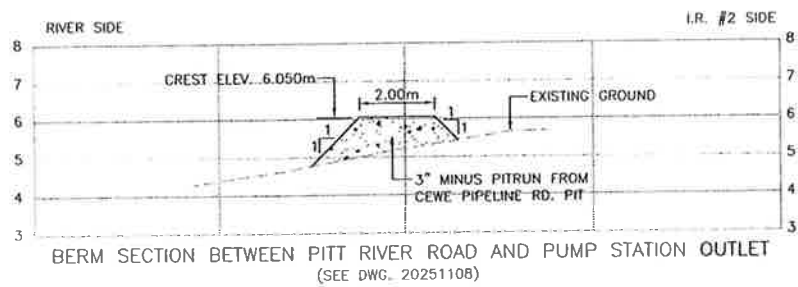
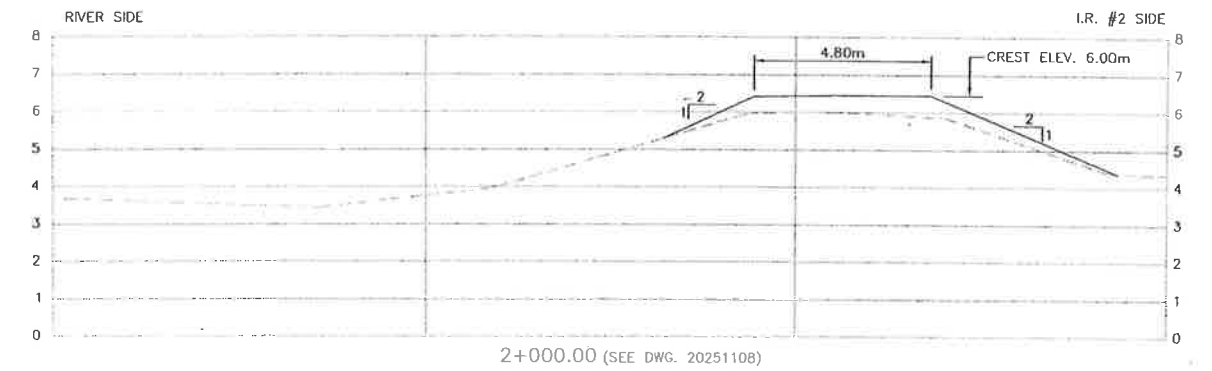
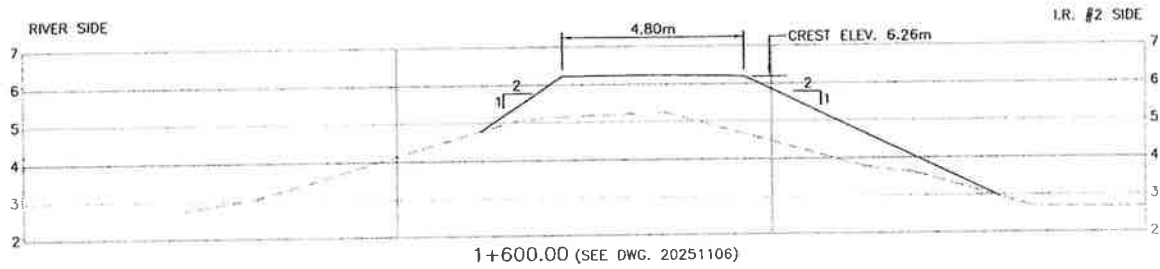
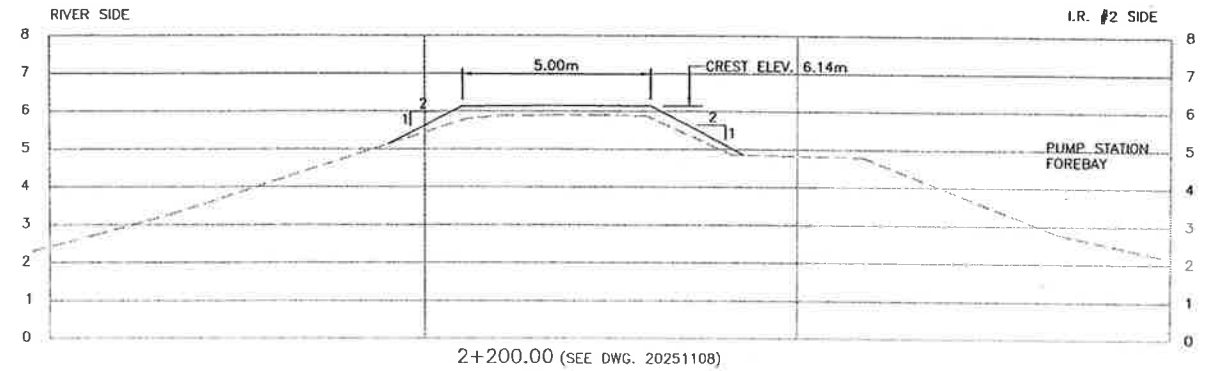
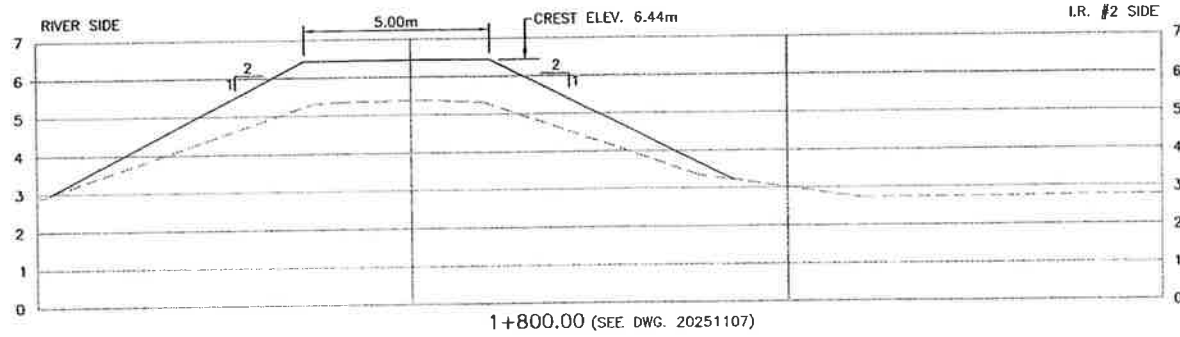
| | | | |
|-------------|----------|---------|------------|
| PROJECT No. | 20072025 | | |
| SCALE | 1:100 | | |
| DRAWN | G.O. | | APRIL 2007 |
| DESIGNED | A.W. | | APRIL 2007 |
| CHECKED | S.G. | | MAY 2007 |
| APPROVED | | | |
| DATE | | INITIAL | |

CITY OF PORT COQUITLAM

I.R. # 2 - CROSS-SECTIONS

| | | |
|---|----------|-------|
| URGENT FLOOD MITIGATION WORKS (2007) COQUITLAM RIVER-LEFT BANK | | |
| DRAWING NUMBER | REV. NO. | SHEET |
| 20251110 | 4 | |

This Drawing Is For The Use Of The Client And Project Indicated
No Representations Of Any Kind Are Made To Other Parties



- NOTE:**
1. SIDE SLOPES AS NOTED
 2. CREST WIDTH=4.6m (TYPICAL) OR AS NOTED
 3. CREST ELEVATION AS NOTED
 4. PROPOSED DIKE CENTERLINE TO MATCH EXISTING DIKE CENTERLINE FROM STA. 1+700 TO 1+950. ADJUST ALIGNMENT AS DIRECTED BY ENGINEER



S. Gunadasa
June 27/07

Time: 9:00 AM
Date: 2007/06/27
Project: 20072025
File: P:\20072025\00_COQUITLAM_RIVER_DIKE\WORKING_DWG\LDL_CIVIL\20251111.DWG (00)

| NO. | DATE | ENG. | BY | SUBJECT |
|-----|------------|------|------|--|
| 4 | JUNE 2007 | S.G. | G.Q. | AS-BUILT |
| 3 | MAY 2007 | A.W. | G.Q. | SETTLEMENT ALLOWANCE |
| 2 | APR. 2007 | A.W. | G.Q. | PROFILE BASED ON INCREASED LOW LEVEL OUTLET CAPACITY OF B.C. HYDRO DAM |
| 1 | APRIL 2007 | A.W. | G.Q. | PRELIMINARY DESIGN |

VERIFY SCALES
BAR IS 20mm ON ORIGINAL DRAWING
0 20mm
IF NOT 20mm ON THIS SHEET, ADJUST SCALES ACCORDINGLY



| | | | |
|-------------|----------|---------|------------|
| PROJECT No. | 20072025 | | |
| SCALE | 1:100 | | |
| DRAWN | G.Q. | | APRIL 2007 |
| DESIGNED | A.W. | | APRIL 2007 |
| CHECKED | S.G. | | MAY 2007 |
| APPROVED | | | |
| DATE | | INITIAL | |

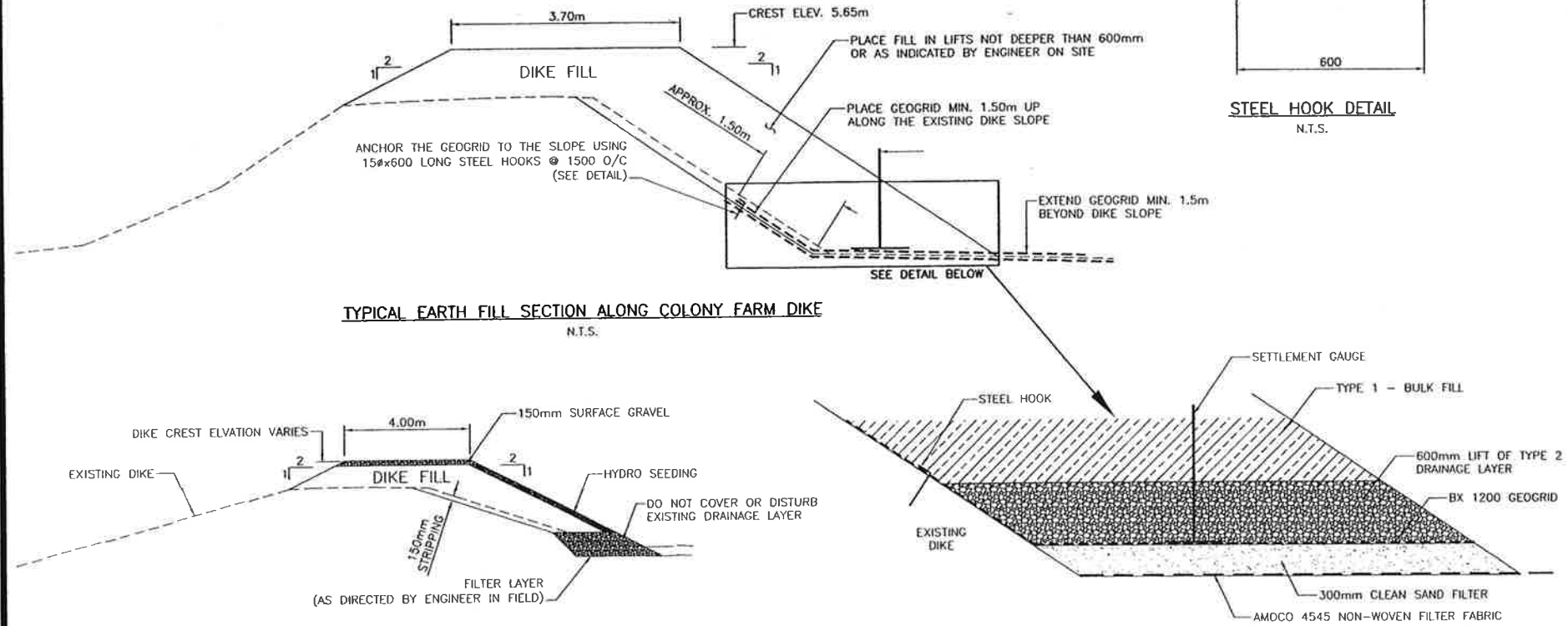
CITY OF PORT COQUITLAM
I.R. # 2 - CROSS-SECTIONS

| | | |
|---|----------|-------|
| URGENT FLOOD MITIGATION WORKS (2007) COQUITLAM RIVER-LEFT BANK | | |
| DRAWING NUMBER | REV. NO. | SHEET |
| 20251111 | 4 | |

This Drawing is For The Use Of The Client And Project Indicated. No Representations of Any Kind Are Made To Other Parties.

COLONY FARM SIDE

I.R. #2 SIDE



TYPICAL EARTH FILL SECTION ALONG COLONY FARM DIKE
N.T.S.

TYPICAL SECTION - I.R. #2 DIKE
N.T.S.

DIKE TOE DETAIL
N.T.S.

STEEL HOOK DETAIL
N.T.S.

Coquitlam River Dike - Proposed Elevations

| Dike Station | Proposed Flood Construction Level (F.C.L.) | Settlement Allowance | Proposed Crest Elevation | Crest Width | Finished Dike Crest |
|--------------|--|----------------------|--------------------------|-------------|---------------------|
| m | m | m | m GSC | m | June 2007 |
| 0+100 | 5.65 | 0.15 | 5.80 | 4.60 | 5.83 |
| 0+200 | 5.65 | 0.15 | 5.80 | 4.60 | 5.86 |
| 0+300 | 5.65 | 0.15 | 5.80 | 4.60 | 5.88 |
| 0+400 | 5.65 | 0.15 | 5.80 | 4.60 | 5.91 |
| 0+500 | 5.65 | 0.15 | 5.80 | 4.60 | 5.91 |
| 0+600 | 5.65 | 0.15 | 5.80 | 4.60 | 5.83 |
| 0+700 | 5.65 | 0.15 | 5.80 | 4.60 | 5.88 |
| 0+800 | 5.65 | 0.15 | 5.80 | 4.60 | 5.86 |
| 0+900 | 5.65 | 0.15 | 5.80 | 4.60 | 5.86 |
| 1+000 | 5.80 | 0.15 | 5.95 | 4.60 | 5.96 |
| 1+100 | 5.81 | 0.15 | 5.96 | 4.60 | 6.01 |
| 1+200 | 5.83 | 0.15 | 5.98 | 4.60 | 6.06 |
| 1+300 | 5.84 | 0.15 | 5.99 | 4.60 | 6.08 |
| 1+350 | 5.85 | 0.40 | 6.25 | 4.60 | 6.31 |
| 1+400 | 5.85 | 0.40 | 6.25 | 4.60 | 6.31 |
| 1+500 | 5.86 | 0.40 | 6.26 | 4.60 | 6.43 |
| 1+600 | 5.88 | 0.40 | 6.28 | 4.60 | 6.44 |
| 1+700 | 5.89 | 0.40 | 6.29 | 4.60 | 6.38 |
| 1+800 | 5.90 | 0.40 | 6.30 | 4.60 | 6.44 |
| 1+900 | 5.90 | 0.15 | 6.05 | 4.60 | 6.27 |
| 2+000 | 5.90 | 0.15 | 6.05 | 4.60 | 6.45 |
| 2+100 | 5.90 | 0.15 | 6.05 | 4.60 | 6.47 |
| 2+200 | 5.90 | 0.15 | 6.05 | 4.60 | 6.14 |

Notes:

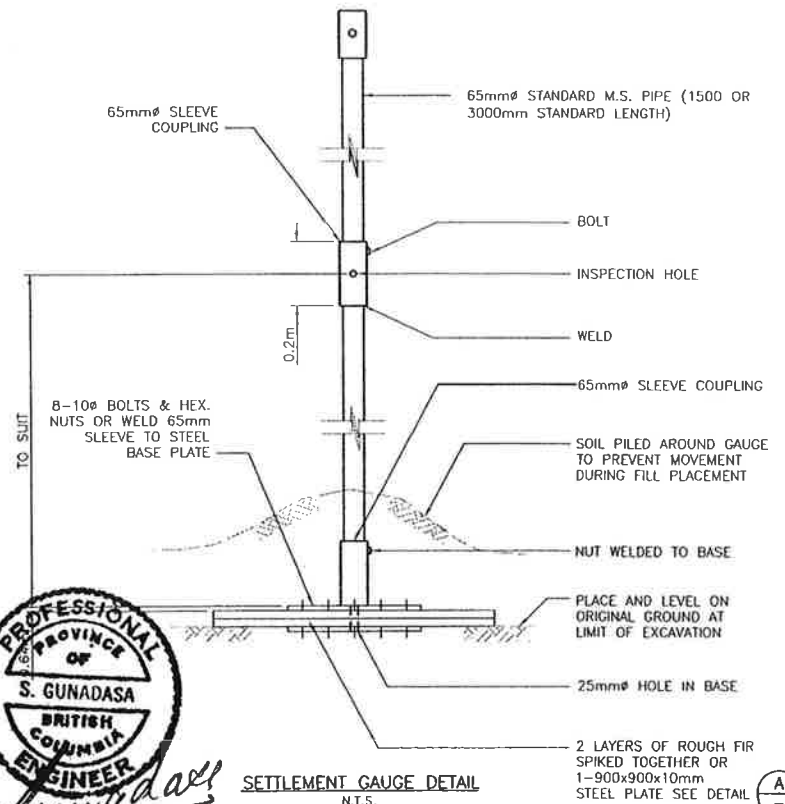
- 1) STA 0+000 is located 10 m east from existing gate on Colony Farms dike (Shaughnessy Street Entrance)
- 2) Design water level = F.C.L. - 600mm
- 3) Proposed Crest Elevations shown includes settlement allowance

COLONY FARM DIKE NOTES:

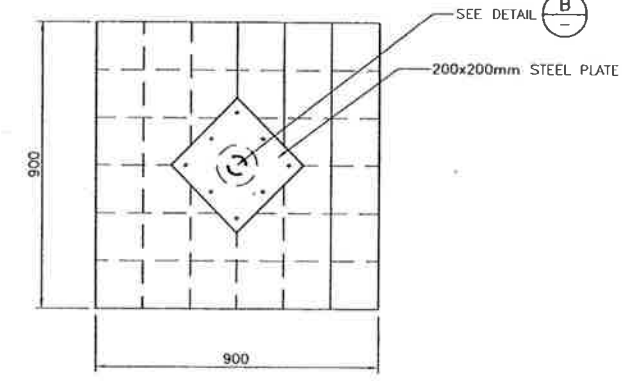
- A. INSTALLATION OF GEOGRID ALONG THE DIKE TOE:**
1. CLEAR TREES AND SHRUBS ON THE DIKE SLOPE AND THE TOE FILL AREA MINIMUM 1.50m BEYOND THE DESIGN SLOPE LINE.
 2. GRUB AND REMOVE STUMPS AND ROOTS ONLY ON THE DIKE SLOPE.
 3. STRIP THE DIKE SLOPE AND SPREAD OVER THE MARSH AREA.
 4. PLACE GEOTEXTILE FABRIC OVER THE TOE AREA AND PLACE 300mm LAYER OF CLEAN FILTER SAND.
 5. INSTALL THE GEOGRID ALONG THE DIKE TOE WITH A MINIMUM 1.50m UP THE SLOPE.
- B. FILL PLACEMENT:**
1. END DUMP OR USE AN EXCAVATOR TO PLACE THE FIRST LIFT NOT DEEPER THAN 600mm.
 2. SPREAD THE FILL STARTING FROM THE DIKE TOE TOWARDS THE MARSH.
 3. LIGHTLY TAMPER DIKE FILL. DO NOT USE VIBRATORY EQUIPMENT ON THE FIRST LIFT.
 4. INSTALL SETTLEMENT GAUGES, MIDWAY OVER THE FIRST LIFT AT A SPACING OF 100m O/C. LOCATE GAUGES WITH VERTICAL AND HORIZONTAL CONTROL.
 5. DO NOT PLACE ADDITIONAL FILL OVER THE FIRST LIFT UNTIL AFTER ONE WEEK HAS LAPSED.
 6. MONITOR SETTLEMENTS GAUGES EVERY DAY. THE FILL HEIGHT AND LIFT THICKNESS WILL BE DETERMINED BY THE ENGINEER BASED ON SETTLEMENT GAUGE AND PIEZOMETER READINGS.

DIKE FILL MATERIAL

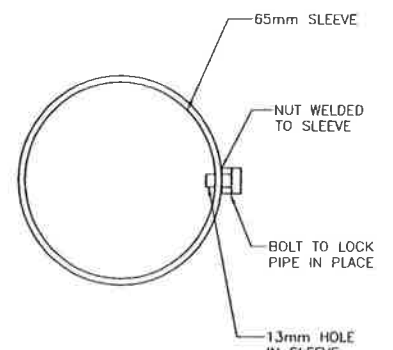
| BULKFILL - TYPE 1: WELL GRADED GRANULAR MATERIAL FOR BULKFILL TYPE 1 SHALL COMPLY WITH THE GRADATION LIMITS GIVEN BELOW: US STANDARD SIEVE SIZE | | DRAINAGE LAYER - TYPE 2: SAND FILTER SHALL BE CLEAN AND NONORGANIC AND COMPLY WITH THE GRADATION LIMITS GIVEN BELOW: US STANDARD SIEVE SIZE | | DIKE AND ROAD SURFACING MATERIAL, TYPE 3: DIKE AND ACCESS ROAD SURFACING MATERIAL SHALL BE COMPOSED OF INERT, DURABLE, CRUSHED AGGREGATE, UNIFORM IN QUALITY, AND FREE FROM SOFT OR DISINTEGRATED PIECES. US STANDARD SIEVE SIZE | |
|--|--------|--|--------|---|--------|
| PERCENTAGE BY WEIGHT PASSING | | PERCENTAGE BY WEIGHT PASSING | | PERCENTAGE BY WEIGHT PASSING | |
| 75.00mm | 100 | 75.00mm | 100 | 19.00mm | 100 |
| 37.50mm | 90-100 | 37.50mm | 75-100 | 9.50mm | 60-100 |
| 19.00mm | 85-100 | 19.00mm | 55-95 | 4.75mm | 40-80 |
| 9.50mm | 80-100 | 9.5mm | 35-75 | 2.36mm | 30-60 |
| 4.75mm | 74-100 | 4.75mm | 15-40 | 1.18mm | 20-40 |
| 2.00mm | 64-100 | 2.00mm | 4-13 | .300mm | 8-20 |
| .850mm | 44-85 | 0.85mm | 0-7 | .075mm | 2-9 |
| .425mm | 15-62 | 0.425mm | 0-2 | | |
| .250mm | 0-30 | | | | |
| .150mm | 0-16 | | | | |
| .075mm | 0-8 | | | | |



SETTLEMENT GAUGE DETAIL
N.T.S.



DETAIL A
N.T.S.



DETAIL B
N.T.S.



Date: 2007/06/27
Drawn: S. Gunadasa
Project: 2007-06-27
AutoCAD File: P:\2007\2025\COQUITLAM_RIVER_DIKE\WORKING_DRAWINGS\COQUITLAM_RIVER_DIKE\20251112.DWG (JB)

| <table border="1"> <thead> <tr> <th>NO.</th> <th>DATE</th> <th>ENG.</th> <th>BY</th> <th>SUBJECT</th> </tr> </thead> <tbody> <tr> <td>3</td> <td>JUNE 2007</td> <td>S.G.</td> <td>J.B.</td> <td>AS-BUILT</td> </tr> <tr> <td>2</td> <td>MAY 2007</td> <td>A.W.</td> <td>G.Q.</td> <td>SETTLEMENT ALLOWANCE</td> </tr> <tr> <td>1</td> <td>MAY 2007</td> <td>S.G.</td> <td>G.Q.</td> <td>PROFILE BASED ON INCREASED LOW LEVEL OUTLET CAPACITY OF B.C. HYDRO DAM</td> </tr> </tbody> </table> | | | | NO. | DATE | ENG. | BY | SUBJECT | 3 | JUNE 2007 | S.G. | J.B. | AS-BUILT | 2 | MAY 2007 | A.W. | G.Q. | SETTLEMENT ALLOWANCE | 1 | MAY 2007 | S.G. | G.Q. | PROFILE BASED ON INCREASED LOW LEVEL OUTLET CAPACITY OF B.C. HYDRO DAM | <p>VERIFY SCALES</p> <p>BAR IS 20mm ON ORIGINAL DRAWING</p> <p>0 20mm</p> <p>IF NOT 20mm ON THIS SHEET, ADJUST SCALES ACCORDINGLY</p> | | <p>PROJECT No. 20072025</p> <p>SCALE AS SHOWN</p> <p>DRAWN G.Q./J.B. APRIL 2007</p> <p>DESIGNED A.W. APRIL 2007</p> <p>CHECKED S.G. MAY 2007</p> <p>APPROVED S.G.</p> <p>DATE INITIAL</p> | | <p>CITY OF PORT COQUITLAM</p> <p>CONSTRUCTION DETAILS</p> | | <p>URGENT FLOOD MITIGATION WORKS (2007)</p> <p>COQUITLAM RIVER-LEFT BANK</p> <p>DRAWING NUMBER 20251112</p> <p>REV. NO. 3</p> <p>SHEET</p> | | |
|---|-----------|------|------|--|------|------|----|---------|---|-----------|------|------|----------|---|----------|------|------|----------------------|---|----------|------|------|--|---|--|---|--|---|--|--|--|--|
| NO. | DATE | ENG. | BY | SUBJECT | | | | | | | | | | | | | | | | | | | | | | | | | | | | |
| 3 | JUNE 2007 | S.G. | J.B. | AS-BUILT | | | | | | | | | | | | | | | | | | | | | | | | | | | | |
| 2 | MAY 2007 | A.W. | G.Q. | SETTLEMENT ALLOWANCE | | | | | | | | | | | | | | | | | | | | | | | | | | | | |
| 1 | MAY 2007 | S.G. | G.Q. | PROFILE BASED ON INCREASED LOW LEVEL OUTLET CAPACITY OF B.C. HYDRO DAM | | | | | | | | | | | | | | | | | | | | | | | | | | | | |

